



## SACRIFICE Musical Creative Team Expands For West End Run

[Back to the Article](#)

by BWW News Desk



In an unusual move for a major musical, lead producer [Toby Simkin](#) has announced that various core creative team positions are now open for applications and consideration. The

creative team comprises the lead producer, authors, composers, director, designers and other key specialists who will shape all aspects of the musical's structure, shape, look and sound in preparation for its Asian workshop prior to its West End opening.

"Creating a new musical in a huge task, both creatively and financially" said [Toby Simkin](#). He continued "Having a creative brain trust of experienced experts collaborating at the table, earlier than later in the development process, provides better insurance for success and more harmony in the final stages of rehearsal." Asked why he his posting publically, he said "In the true spirit of international production, we want to consider the best of the best from around the world, not just from my iPhone contact list."

"Musical theatre is a collaborative art form. All aspects of the shows entertainment value (story, music, look and feel) combines to create an in-theatre experience that must be perfect the first time an audience member buys a ticket - so having these collaborators earlier than later just makes perfect sense." Added Bobby Garcia.

The Creative Team is very involved in the development of all facets of the development of the musical, and therefore proven experience with 1st class theatrical productions, along with a collaborative spirit and a production vision that aligns with the existing team is imperative.

The following core Creative team positions are available for Sacrifice:

Scenic Designer (plus Associate)

experience creating a visual language, researching and creating historically accurate and realistic settings and props for a 1st class tourable/transferable production, in close concert with other members of the creative team. This may involve working with shops within China for sourcing and construction of key pieces. Scenic Designer may be combined with Costume Designer for the right applicant. Possibility of roll over in design capacity to film version for right candidate.

Costume Designer (plus Associate)



STAR OF BROADWAY'S JERSEY BOYS  
**JARROD SPECTOR**  
 IN CONCERT AT  
 FEINSTEIN'S AT  
 LOEWS REGENCY  
 JAN 31 & FEB 7  
 BUY TICKETS

[Seeing Broadway Show?](#)

Why not start it off at La Rivista. Now featuring a price fixed menu  
[www.LaRivistaNYC.COM](http://www.LaRivistaNYC.COM)

[Concert in shanghai](#)

concerts in Shanghai Tel: 400-610-3721 021-51509199

[sh.piao.com.cn/en\\_piao/](http://sh.piao.com.cn/en_piao/)

[Theatre in Croydon UK](#)

Ashcroft Theatre Croydon, download our latest season brochure at...

[www.fairfield.co.uk](http://www.fairfield.co.uk)

[London Eye Booking](#)

Buy Fast-Track Tickets. 15 Minute Check-in - VIP Service - Print-n-Go

[www.365tickets.com](http://www.365tickets.com)



Ads by Google

experience creating a visual language, researching and creating historically accurate and realistic wardrobe for a 1st class production, in close concert with other members of the creative team. This may involve working with shops within China for sourcing and construction of key pieces. Possibility of roll over in design capacity to film version for right candidate. Costume Designer may be combined with Scenic Designer for the right applicant.

#### Projection Designer (plus Associate)

experience researching and creating historically accurate and realistic visuals and special effects for a 1st class production, in close concert with other members of the creative team.

#### Lighting Designer (plus Associate)

experience creating visually striking and rich lighting states for a 1st tourable/transferable production, in close concert with other members of the creative team.

#### Sound Designer

experience creating an audio experience blending east and west sound and instrumentation, along with authentic sound effects and enhancing the production for a 1st tourable/transferable production, in close concert with other members of the creative team.

#### Hair & Make-up Designer

experience researching and creating historically accurate and realistic hair and makeup for a 1st class production, in close concert with other members of the creative team.

#### Choreographer

experience researching and creating historically adaptive movement using period dance and a hybrid score for a 1st class production, in close concert with other members of the creative team.

#### Fight Director

experience creating historically accurate and realistic fight scenes using period weaponry for a 1st class production, in close concert with other members of the creative team.

#### Casting Director

experience with casting a 1st class production, particularly in identifying triple threat Chinese/Asian performers and assessing same for artistic, style, stamina and suitability for both Asian workshop and West End, in close concert with other members of the creative team. Possibility of roll over in design capacity to film version for right candidate. CDG members preferred.

All candidates for the above positions must hold a valid passport and be willing to travel extensively for extended periods of time. These positions will be contracted or work-for-hire agreements, in line with standard theatrical agreements, and some positions may require membership in various unions, guilds or associations.

For a complete list of available positions, and instructions on how to apply visit:

<http://www.SacrificeWorldwide.com/JoinUs>

In other news today, the producers further announced that the highly anticipated financial prospectus is completed, and ready for investor review. All applications for investment will be taken on first come, first served basis. The production will capitalize at around £4m. For more information on participation in the musical's West End production, visit the website.

The musical of Sacrifice is directed by Bobby Garcia, produced by [Toby Simkin](#), with a book and lyrics by [Kenneth H. Clarke](#), music by Richard Daniels & Mark Troop, associate producers include London entrepreneurs Richard Hardwick and William Ong as well as DJ Wizniak. Sacrifice is the musical story of China's greatest Emperor stealing the Wife of his Son. In his quest to win her back the Prince aligns himself with China's greatest Villain. Together they create China's greatest Love story and sacrifice. Dates of both the Asian workshop and the London opening will be announced at a future time.

<http://www.SacrificeWorldwide.com>



# 2-FOR-1 OFF - BWAY

HOME
GET TICKETS
UNITED STATES
THE WORLD
DATABASE
SPECIAL OFFERS

### MEMBER LOG IN

REGISTER NOW!

### SHOWS & TICKETS

Broadway      Tours  
 Off-Bway      London

### BWW TODAY

Latest News

CDs/Books/DVDs

Grosses **1/23**

Photos

Reviews

TV/Video

Web Radio

### MESSAGE BOARDS

Broadway      Off-topic  
 West End      Student

### CITY GUIDE

Event Calendar

NYC Spotlight

Hotel Finder

Restaurant Guide

### FEATURES

Auditions

Classifieds **\*new\***

BWW Junior

Rialto Chatter

Stage to Screen

Store

Student Center **\*new\***

Tony Awards

Twitter Watch

### BROADWAY EXTRAS

Feedback

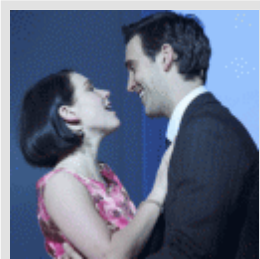
Photo IQ

Your Settings

Translate

pick a language

powered by Google



## BWW Reviews: LOVE STORY, Duchess Theatre, Jan 4 2011



**SACRIFICE**  
 Musical Creative  
 Team Expands  
 For West End Run



UK Critics' Circle  
 Theatre Award  
 Winners  
 Announced!

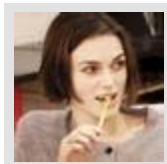
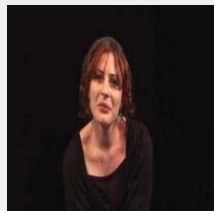


Photo Coverage:  
**THE CHILDREN'S  
 HOUR** With Keira  
 Knightley And  
 Elisabeth Moss



Joe Cole, Kerron  
 Darby, Holli  
 Dempsey Join Bush  
 Theater's School  
 Season

### This Week's Top Features:



**STAGE TUBE:**  
 West End Stars for  
 'It Gets Better'



In Tech!



Danielle & Toto

VIEW MORE

# 2-FOR-1 OFF-BROADWAY TICKETS



Get 2-for-1 drinks after the show.

BOOK HERE



Get UK / West End Special Off

E-Mail:



### UK News Desk

Last Update: 1/24 at 5

GLEE: Season 2, Episode 3 - 'Grilled Cheesus'

THE WIZARD OF OZ Blog: In Tech!

Barks, Triplett, Jones And Vere Join THE SONGS OF BOBBY CRONIN

Photo Flash: Psycho Beach Party Rehears: UK Production

Carina Gillespie Joins West End Cast of GREASE, 1/24

Atomic Kitten's Natas Hamilton To Star In BLOOD BROTHERS, 1/24

BWW: UK Gets New Facebook Page!

### UK Regional News


Tompsett, Janson, et Set for FIRST THING: LAST, Jan. 30

BWW Reviews: Maya Barons Court, Januar 24 2011

Sanditen Returns to London & New York with THOUGHTS 'ROUND MIDNIGHT; Debut

Critics' Circle Awards be Presented Jan 25

Nick Lloyd Webber's



**West End**

NYC CITY CENTER **ENCORES!**

**LOT IN THE STARS**

**FEB 3 - 6**  
**GET TICKETS**

HOME
GET TICKETS
UNITED STATES
THE WORLD
DATABASE
SPECIAL OFFERS
**STUDENTS**

GO
Twitter
Facebook
LinkedIn

**MEMBER LOG IN**  
REGISTER NOW!

**SHOWS & TICKETS**

Broadway    Tours  
Off-Bway    London

**BWW TODAY**

Latest News  
CDs/Books/DVDs  
Grosses **1/23**  
Photos  
Reviews  
TV/Video  
Web Radio

**MESSAGE BOARDS**

Broadway    Off-topic  
West End    Student

**CITY GUIDE**




Event Calendar  
NYC Spotlight  
Hotel Finder  
Restaurant Guide

**FEATURES**

Auditions  
Classifieds **\*new\***  
BWW Junior  
Rialto Chatter  
Stage to Screen  
Store  
Student Center **\*new\***  
Tony Awards  
Twitter Watch

**BROADWAY EXTRAS**

Feedback  
Photo IQ  
Your Settings

  
  
  
**Get BWW Wireless**


## SACRIFICE Musical Creative Team Expands For West End Run

[Feedback](#)
[Printer-Friendly](#)
[E-Mail Article](#)

Enter Your E-Mail Address:

Tuesday, January 25, 2011; Posted: 05:01 PM - by [BWW News Desk](#)

[Share](#)



In an unusual move for a major musical, lead producer [Toby Simkin](#) has announced that various core creative team positions are now open for applications and consideration. The creative team comprises the lead producer, authors, composers, director, designers and other key specialists who will shape all aspects of the musical's structure, shape, look and sound in preparation for its Asian workshop prior to its West End opening.

"Creating a new musical in a huge task, both creatively and financially" said [Toby Simkin](#). He continued "Having a creative brain trust of experienced experts collaborating at the table, earlier than later in the development process, provides better insurance for success and more harmony in the final stages of rehearsal." Asked why he his posting publicly, he said "In the true spirit of international production, we want to consider the best of the best from around the world, not just from my iPhone contact list."

"Musical theatre is a collaborative art form. All aspects of the shows entertainment value (story, music, look and feel) combines to create an in-theatre experience that must be perfect the first time an audience member buys a ticket - so having these collaborators earlier than later just makes perfect sense." Added Bobby Garcia.

The Creative Team is very involved in the development of all facets of the development of the musical, and therefore proven experience with 1st class theatrical productions, along with a collaborative spirit and a production vision that aligns with the existing team is imperative.

The following core Creative team positions are available for Sacrifice:

**Scenic Designer (plus Associate)**  
experience creating a visual language, researching and creating historically accurate and realistic settings and props for a 1st class tourable/transferable production, in close concert with other members of the creative team. This may involve working with shops within China for sourcing and construction of key pieces. Scenic Designer may be combined with Costume Designer for the right applicant. Possibility of roll over in design capacity to film version for right candidate.

**Costume Designer (plus Associate)**  
experience creating a visual language, researching and creating historically accurate and realistic wardrobe for a 1st class production, in close concert with other members of the creative team. This may involve working with shops within China for sourcing and construction of key pieces. Possibility of roll over in design capacity to film version for right candidate. Costume Designer may be combined with Scenic Designer for the right applicant.

**Projection Designer (plus Associate)**  
experience researching and creating historically accurate and realistic visuals and special effects for a 1st class production, in close concert with other members of the creative team.

**Lighting Designer (plus Associate)**  
experience creating visually striking and rich lighting states for a 1st tourable/transferable production, in close concert with other members of the creative team.

**Sound Designer**  
experience creating an audio experience blending east and west sound and instrumentation, along with authentic sound effects and enhancing the production for a 1st tourable/transferable production, in close concert with other members of the creative team.

**Hair & Make-up Designer**  
experience researching and creating historically accurate and realistic hair and makeup for a 1st class production, in close concert with other members of the creative team.

**Choreographer**  
experience researching and creating historically adaptive movement using period dance and a hybrid score for a 1st class production, in close concert with other members of the creative team.

**Fight Director**  
experience creating historically accurate and realistic fight scenes using period weaponry for a 1st class production, in close concert with other members of the creative team.

**Casting Director**  
experience with casting a 1st class production, particularly in identifying triple threat Chinese/Asian performers and assessing same for artistic, style, stamina and suitability for both Asian workshop and West End, in close concert with other members of the creative team. Possibility of roll over in design capacity to film version for right candidate. CDG members preferred. All candidates for the above positions must hold a valid passport and be willing to travel extensively for extended periods of time. These positions will be contracted or work-for-hire agreements, in line with standard theatrical agreements, and some positions may require membership in various unions, guilds or associations.

For a complete list of available positions, and instructions on how to apply visit: <http://www.SacrificeWorldwide.com/JoinUs>

In other news today, the producers further announced that the highly anticipated financial prospectus is completed, and ready for investor review. All applications for investment will be taken on first come, first served basis. The production will capitalize at around £4m. For more information on participation in the musical's West End production, visit the website.

**Production Services**  
State-of-the-art production facilities for TV, radio & online.  
[intaj.twofour54.com](http://intaj.twofour54.com)

**Concert in Shanghai**  
concerts in Shanghai  
Tel: 400-610-3721 021 -51509199  
[sh.piao.com.cn/en\\_piao/](http://sh.piao.com.cn/en_piao/)

**Seeing Broadway Show?**  
Why not start it off at La Rivista. Now featuring a price fixed menu  
[www.LaRivistaNYC.COM](http://www.LaRivistaNYC.COM)

**Israel Philharmonic in NY**  
Carnegie Hall - February 22nd Zubin Mehta and Yefim Bronfman  
[www.carnegiehall.org](http://www.carnegiehall.org)

**Vouchers Theatre Tokens**  
Non Expiry - West End & Local Shows Gift Tokens UK Delivery Thursday  
[FirstBookShop.com](http://FirstBookShop.com)

**ABOUT US**

[http://westend.broadwayworld.com/article/SACRIFICE\\_Musical\\_Creative\\_Team\\_Expands\\_F...](http://westend.broadwayworld.com/article/SACRIFICE_Musical_Creative_Team_Expands_F...) 1/26/2011

HOME GET TICKETS UNITED STATES THE WORLD DATABASE SPECIAL OFFERS STUDENTS Enter Search go [social icons]

**MEMBER LOG IN**  
REGISTER NOW!

**SHOWS & TICKETS**

Broadway Tours  
Off-Bway London

**BWW TODAY**

Latest News  
CDs/Books/DVDs  
Grosses 1/23  
Photos  
Reviews  
TV/Video  
Web Radio

**MESSAGE BOARDS**

Broadway Off-topic  
West End Student

**CITY GUIDE**

Event Calendar  
NYC Spotlight  
Hotel Finder  
Restaurant Guide

**FEATURES**

Auditions  
Classifieds \*new\*  
BWW Junior  
Rialto Chatter  
Stage to Screen  
Store  
Student Center \*new\*  
Tony Awards  
Twitter Watch

**BROADWAY EXTRAS**

Feedback  
Photo IQ  
Your Settings

twitter  
facebook  
iPhone App  
Get BWW Wireless

KOWA  
DENTAL  
Pudong JinMao  
Tel: 400 6060 222  
Puxi HangLi  
Tel: 400 6969 222  
ABOUT US

## SACRIFICE Musical Creative Team Expands For West End Run

[Feedback](#) [Printer-Friendly](#) [E-Mail Article](#)

Enter Your E-Mail Address:

Tuesday, January 25, 2011; Posted: 05:01 PM - by [BWW News Desk](#)  
| [Share](#)

The musical of Sacrifice is directed by Bobby Garcia, produced by [Toby Simkin](#), with a book and lyrics by [Kenneth Clarke](#), music by Richard Daniels & Mark Troop, associate producers include London entrepreneurs Richard Hardwick and William Ong as well as DJ Wizniak. Sacrifice is the musical story of China's greatest Emperor stealing the Wife of his Son. In his quest to win her back the Prince aligns himself with China's greatest Villain. Together they create China's greatest Love story and sacrifice. Dates of both the Asian workshop and the London opening will be announced at a future time.

<http://www.SacrificeWorldwide.com>